

TIFFAN

Y & Co.

THIS IS TIFFANY  
N°6



Who doesn't love to be taken by surprise?  
To see things through new eyes?  
At Tiffany, we have always been instigators of  
thought and action, believers in pushing  
boundaries, champions of taking things a little  
further than most would dare. Thinkers and  
dreamers lie at the heart of our legacy, and every  
day, through exquisite design and masterful  
craftsmanship, we create a world that  
is beguiling and beautifully unexpected.

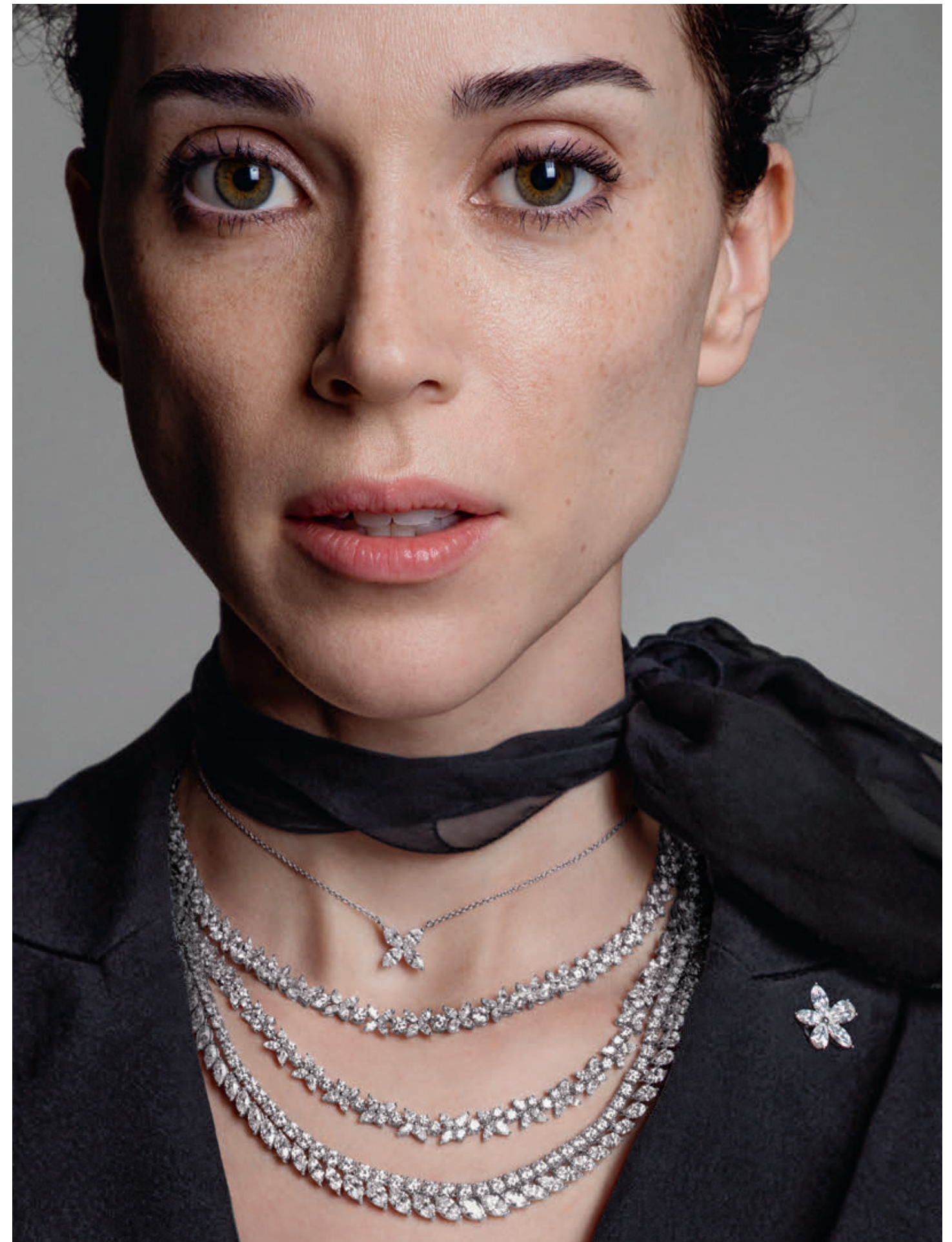
This is Tiffany.

# There's *Only One*

TIFFANY HAS ALWAYS STOOD FOR CREATIVITY,  
PASSION, OPTIMISM AND INDIVIDUALITY.  
THESE EXUBERANTLY UNCONVENTIONAL WOMEN AND  
MEN EPITOMIZE EVERYTHING WE BELIEVE IN.

Photographs by Inez van Lamsweerde and Vinoodh Matadin





*Previous page:* Tiffany Keys with diamonds. Chain sold separately. *This page:* Paloma's Graffiti love and Tiffany Victoria® designs. Ring with diamonds and I.D. bracelet. Original designs copyrighted by Paloma Picasso. *Opposite page:* Tiffany Victoria® designs and necklace with diamonds.



This spread: Tiffany City HardWear, Tiffany Tags, Tiffany T, Tiffany Victoria®, Paloma Picasso® and Tiffany Metro designs.  
Tiffany® Diamond Wedding Band. Original designs copyrighted by Paloma Picasso.



*Opposite page: Tiffany & Co. Schlumberger Bird on a Rock clip.  
This page: Tiffany East West® 2-Hand 42 x 25 mm watch and square link men's bracelet.*



Tiffany T and Tiffany Metro designs.



Tiffany solitaire, Tiffany Victoria® and Return to Tiffany™ designs. Chain sold separately. Necklace with diamonds.



*Opposite page: Tiffany T, Tiffany Enchant® and Tiffany Victoria® designs.  
This page: Return to Tiffany™, Tiffany Metro, Tiffany Tags and Tiffany City HardWear designs.*



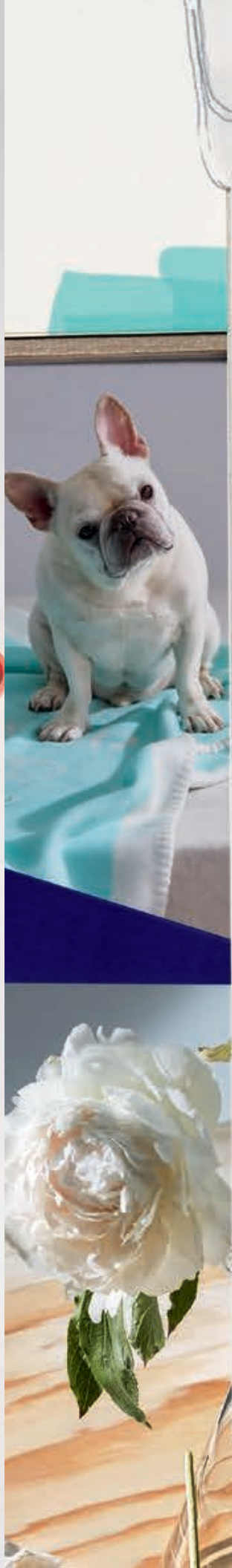
# *A Beautiful Life*

WHEN FORM FOLLOWS FUNCTION,  
BEAUTY BEFRIENDS WHIMSY  
AND QUALITY COMES BEFORE ALL  
ELSE, THE GAME OF LIVING WELL  
CHANGES COMPLETELY. TIFFANY'S  
NEW HOME & ACCESSORIES  
COLLECTION REWRITES THE RULES  
OF LUXURY.



Photographs by Roe Ethridge





Previous spread and this page: Home and Accessories designs.





Opposite page: Leather goods and Everyday Objects.  
This page: Tiffany Baby designs.

# The Silver Cup Project

TO LIVE WITH BEAUTY EVERY DAY,  
WE MUST TAKE IT, REIMAGINE IT, TRANSFORM  
IT AND MAKE IT COMPLETELY OUR OWN.  
A FEW DISTINCTIVE POINTS OF VIEW.



Photographs by Martyn Thompson  
Intro Photograph by Roe Ethridge  
Illustrations by Jean Philippe Delhomme



Opposite page: Sterling silver paper cup.

*J. H. 1142*



WHAT MAKES YOU HAPPY

*The morning light*

WHAT MAKES A HOME

*Books coffee love*

YOUR TIFFANY STERLING SILVER CUP

*A perfect vessel*

PATTI SMITH, WRITER





Ryan Korban



WHAT MAKES YOU HAPPY  
*Friday, Saturday, Sunday.*

WHAT MAKES A HOME  
*A distinct feeling*

YOUR TIFFANY STERLING SILVER CUP  
*Redefines everyday luxuries.*

RYAN KORBAN, INTERIOR DESIGNER

*Meet Roberta Hugo Guinness*



WHAT MAKES YOU HAPPY

*dog-earred books  
old friends, Sunshine, Flowers*

WHAT MAKES A HOME

*well-stocked pantry  
Children's laughter, Pets, Home cooking*

YOUR TIFFANY STERLING SILVER CUP

*perfect shiny trophy  
Mint Juleps, Classic design, Polished silver*

ELLIOTT PUCKETTE AND HUGO GUINNESS, ARTISTS





Vanessa Traina



WHAT MAKES YOU HAPPY

My husband, my son, weekends

WHAT MAKES A HOME

My husband, my son, warmth

YOUR TIFFANY STERLING SILVER CUP

Timeless, meaningful, purposeful

VANESSA TRAINA, CREATIVE DIRECTOR



*Emily*



WHAT MAKES YOU HAPPY

*traveling*

WHAT MAKES A HOME

*Scent, sound, flowers.*

YOUR TIFFANY STERLING SILVER CUP

*turns anything into art.*

EMILY WEISS, FOUNDER AND CEO OF GLOSSIER



# Rare Specimen

NATURE IS A MAD GENIUS AND A BIT OF A SHOW-OFF.  
HERE, SOME OF HER FINEST WORK —  
ABSURDLY BEAUTIFUL CREATIONS THAT NEVER  
FAIL TO MESMERIZE AND SURPRISE.

Photographs by Carlton Davis





**Aquamarine**

*Previous page and this spread:  
Rings in platinum  
with gemstones and diamonds.*



**Yellow Sapphire**



**Green Tourmaline**



**Pink Tourmaline**



**Green Tourmaline**



Spessartite



Opposite page: Ring in platinum with a gemstone and diamonds.  
This page: Rings in platinum with gemstones and diamonds,  
clockwise from top left: aquamarine, tanzanite, green tourmaline and tsavorite.

# All You Need

LOVE IS THE ESSENCE OF TIFFANY.  
AND THE NEW TIFFANY FRAGRANCE IS  
THAT ESSENCE, CAPTURED.

Photographs by Steven Meisel  
Bottle photograph by Mario Godlewski



TITLE *Modern Alchemy*

PHOTOGRAPHS *Frederik Veronuyse*



*Previous page: Tiffany Keys, Tiffany 1837™, Tiffany T, Tiffany Embrace® and Tiffany Cirklet designs. Chains sold separately. This page: Tiffany Fragrance. Opposite page: Tiffany Cirklet necklaces.*



---

IN CONVERSATION WITH DANIELA ANDRIER,  
THE PERFUMER BEHIND TIFFANY, THE FRAGRANCE

---

*a beautiful  
mix of  
tradition  
and  
modernity*

---

To establish the bond between a brand and a perfume is magical and poetic. What I had in mind when working on Tiffany's fragrance was to make something that has a radiant light to it—like a beautiful stone that you wear. I wanted to embrace the values of the brand: love, elegance, creativity and modernity. The scent is a sparkling floral musk, a contemporary take on highly precious ingredients of traditional haute perfumery. The process of creation is very intuitive. I realized after the fact that my first choice, Iris, was both the most expensive ingredient in perfumery, and almost faceted—like a gemstone. We introduced a unique version of Iris, developed exclusively for Tiffany. We were able to strip away certain elements, keeping only its pure, bright and sensual side.

I combined this with other new and refined musk and floral ingredients, which were crafted to bring out a personality very different from their traditional essences. The use of these exclusive materials, combined in an artisanal way, is a beautiful mix of tradition and modernity. It allowed us to create something timeless that smells unlike anything that's come before.

---



*Previous page: Tiffany Keys, Tiffany 1837™, Tiffany T, Tiffany Embrace® and Tiffany Circllet designs. Chains sold separately. This page: Tiffany Fragrance. Opposite page: Tiffany Circllet necklaces.*



Specimen:	Iris	Subfamily:	Iridoideae
Kingdom:	Plantae	Tribe:	Irideae
(unranked):	Angiosperms	Genus:	Iris
(unranked):	Monocots	Type species:	<i>Iris germanica</i>
Order:	Asparagales	Subgenera:	<i>Hermodactyloides</i> , <i>Iris</i> , <i>Limniris</i> , <i>Nepalensis</i> , <i>Scorpiris</i> , <i>Xiphium</i>
Family:	Iridaceae		



Previous page: Tiffany Keys, Tiffany 1837™, Tiffany T, Tiffany Embrace® and Tiffany Circllet designs. Chains sold separately. This page: Tiffany Fragrance. Opposite page: Tiffany Circllet necklaces.



PROJECT	Tiffany Fragrance
HEART NOTE	Iris
FRAGRANCE	This modern, artisanal scent, with the noble iris at its heart, is as exhilarating and inspired as love itself.
SAMPLE	
NOTES	Top notes of vert de mandarine. At the heart, a precious iris flower is the hero ingredient. Patchouli and musk base notes. The final structure is both unexpected and timeless—scent in its most elemental form.
EDITORIAL	<i>Modern Alchemy</i>



Previous page: Tiffany Keys, Tiffany 1837™, Tiffany T, Tiffany Embrace® and Tiffany Circllet designs. Chains sold separately. This page: Tiffany Fragrance. Opposite page: Tiffany Circllet necklaces.

# Urban Legends

TIFFANY'S CREATIVITY HAS ALWAYS BEEN PART OF THE ENERGY  
OF NEW YORK, WITHOUT RULES, WITHOUT LIMITS,  
WITHOUT FEAR. AFTER 180 YEARS, WE'VE BECOME PART  
OF THE VERY FABRIC OF THIS AMAZING CITY.

Photographs by Raymond Meier





© FLC

“A hundred times I have thought: New York is a catastrophe,  
and fifty times: it is a beautiful catastrophe.”

—Le Corbusier



Opening page: The Tiffany® Setting. Opposite page: Tiffany Keys petals key pendant.  
Chain sold separately. This page: Return to Tiffany™ designs.

“... New York is always hopeful. Always it believes that something good is about to come off, and it must hurry to meet it.”

—Dorothy Parker



*This page:* Tiffany City HardWear wrap bracelet.

*Opposite page:* Paloma's Graffiti love pendant with diamonds. Original designs copyrighted by Paloma Picasso.





© 1999 by The Regents of the University of California © Editions Gallimard, Paris, 1954.

“There is something in the New York air  
that makes sleep useless.”

—Simone de Beauvoir



Opposite page: Tiffany T smile pendant with diamonds.  
This page: Elsa Peretti® Open Heart pendant on silk. Original designs copyrighted by Elsa Peretti.

“New York is a diamond iceberg  
floating in river water.”

—Truman Capote



*This page: Tiffany Victoria® designs. Opposite page: Tiffany & Co. Schlumberger Sixteen Stone ring.*



“It’ll be a great place if they ever finish it.”

—O. Henry



*Opposite page: Tiffany East West® automatic 3-Hand, 46.5 x 27.5 mm watch.*

*This page: Tiffany T square bracelets with diamonds.*



JUST WHEN YOU  
THOUGHT YOU KNEW  
US, WE GO AND  
MIX IT UP AGAIN.  
THE ELEMENTS OF  
THE RETURN TO TIFFANY™  
COLLECTION—  
REINVENTED,  
REWORKED, RENEWED.

TO  
TIFFANY

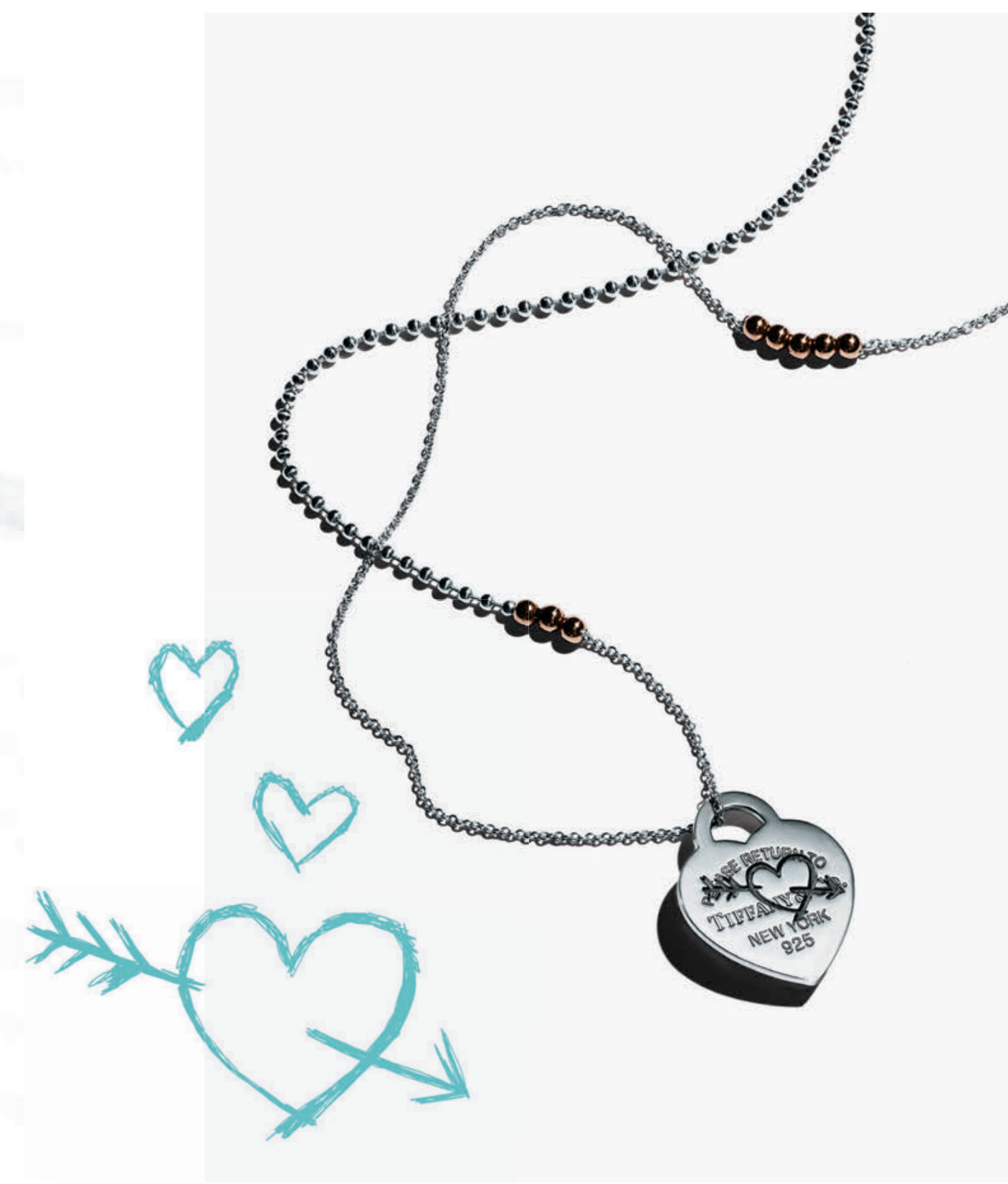






Opening page: Return to Tiffany™ pendant. Previous spread: Tiffany Tags, Return to Tiffany™ and Paloma's Graffiti love designs. Original designs copyrighted by Paloma Picasso. Chain sold separately. This spread: Return to Tiffany™ and Tiffany solitaire pendant.





Previous spread: Tiffany T, Paloma's Graffiti love, Tiffany Tags, Return to Tiffany™ and pet accessories designs. This spread: Tiffany T, Paloma's Graffiti peace and Return to Tiffany™ designs. Chain sold separately. Original designs copyrighted by Paloma Picasso.

# Love Stories

“They slipped briskly into an intimacy  
from which they never recovered.”

—F. Scott Fitzgerald



Photographs by Thomas Milewski

F. SCOTT FITZGERALD IS A TRADEMARK OF THE FITZGERALD ESTATE LIMITED.

10 YEARS

4 KIDS

2 DOGS

3 HOUSES

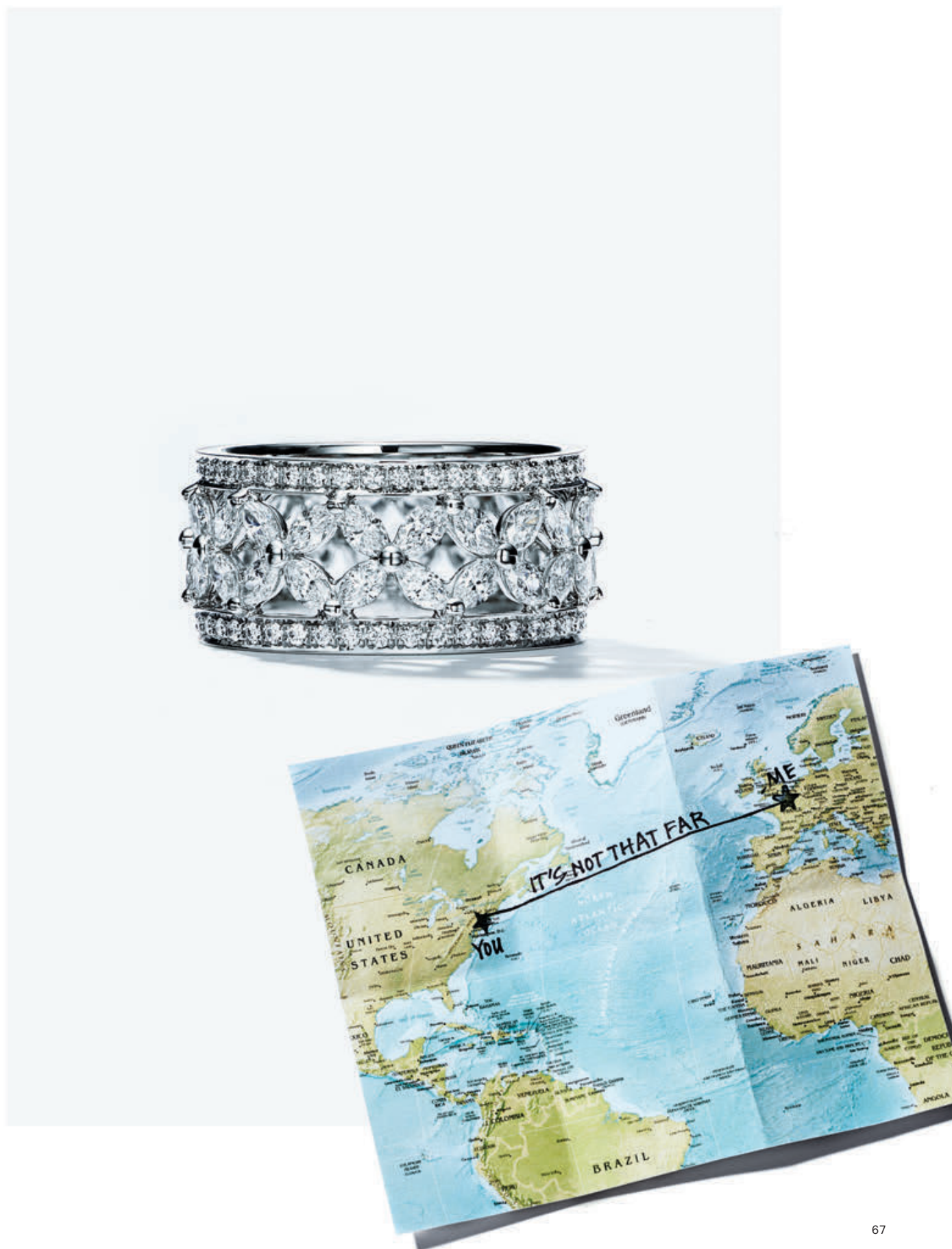
5 HAMSTERS

AND  
1 PARAKEET  
LATER...

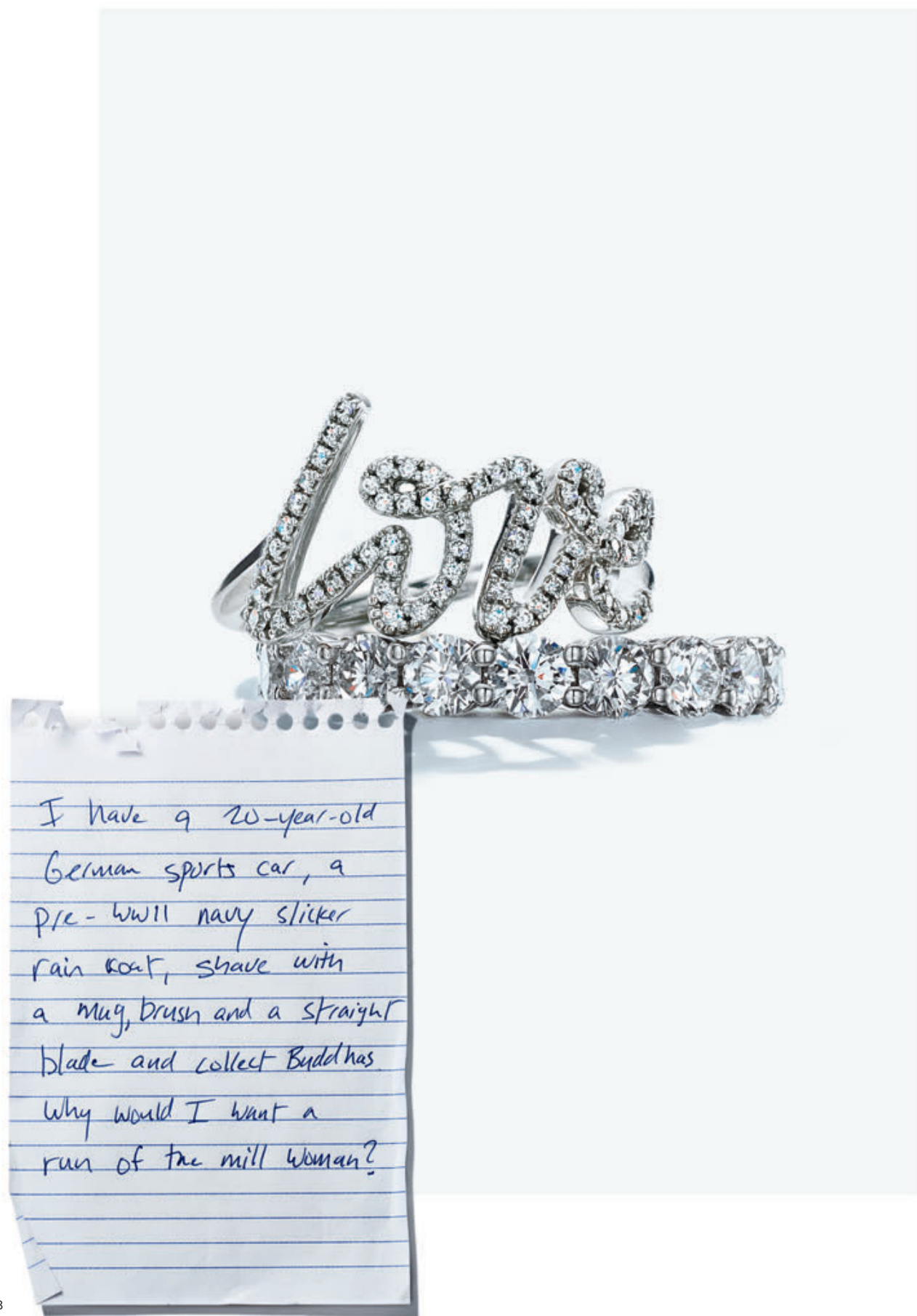
I'D  
DO IT  
ALL OVER  
AGAIN

(MAYBE  
WITHOUT  
THE PARAKEET)

love,  
BEN



Opening page: Tiffany Classic™ and Tiffany Harmony® rings.  
This spread: Tiffany Soleste and Tiffany Victoria® rings.







Tiffany Classic™ and Tiffany Embrace® band rings.  
For more information on customizing and engraving, please visit [Tiffany.com](https://www.tiffany.com).



The Tiffany® Setting.



# My TIFFANY

FOR MODEL/ACTIVIST DOUTZEN KROES, HER TIFFANY DIAMOND WEDDING BAND CHANGED EVERYTHING.

My husband and I met in 2009 when mutual friends introduced us at a music festival. When it was over, I gave him every possible phone number or email address for me. I wanted to make sure there was no way he could not find me. I never really stopped to think it through. It felt right and everything made sense. I simply let my heart guide me on this, and it has led me so well. We got engaged in Suriname, where he's from, on New Year's Eve of 2009. We were on jet skis on a river at the end of the day. The sun was setting and it was quiet and incredibly beautiful. I thought I had seen a box in his pocket and was so sure he was about to propose, and then he didn't! I couldn't believe it! It wasn't until a little later that evening, in a little tree house deep in the jungle, that he asked me to marry him. I think he chose that moment and that

place because he felt very connected to his roots in his home, very empowered. It was magical, very tender. When it came time to pick a wedding band, I knew I wanted to go to Tiffany because that's such a dream. We were married a short time later on a small houseboat on a canal in Amsterdam. Something felt very different for me after that day. Because I had been traveling all over the world from such a young age, I felt like I was always searching, always seeking. Having that band on my finger was a very grounding thing. It meant I could stop looking around, and just be at peace, that we could create our own beautiful family. When I take it off for a shoot, it always feels a little strange, like my heart is empty. So I put it back on as soon as I can. This ring represents our love, our bond, our family and the future we are building together.

Portrait by Paul Bellaart. Still life courtesy of Doutzen Kroes.

VISIT [TIFFANY.COM/FALL](http://TIFFANY.COM/FALL)

TIFFANY®, TIFFANY & CO.®, T&CO®, TIFFANY VICTORIA®, TIFFANY ENCHANT®, TIFFANY 1837™, the TIFFANY® SETTING, TIFFANY EAST WEST®, RETURN TO TIFFANY™, TIFFANY HARMONY®, TIFFANY CLASSIC™, TIFFANY EMBRACE®, Tiffany & Co. Schlumberger, Tiffany Blue Box and the color TIFFANY BLUE® are trademarks or registered trademarks of Tiffany and Company and its affiliates, in the U.S. and other countries. All designs copyrighted by Tiffany and Company except where otherwise noted. Elsa Peretti® and Diamonds by the Yard® are trademarks of Elsa Peretti. Original designs copyrighted by Elsa Peretti. Paloma Picasso® is a trademark of Paloma Picasso. Paloma Picasso designs copyrighted by Paloma Picasso. Merchandise shown may not be available in all locations. Items may appear larger or smaller due to photography techniques. To remove your name from our mailing list, please contact customer service.

© 2017, Tiffany and Company. INTEUK17

On the cover: Tiffany T and Tiffany Metro designs with diamonds.

Introduction: Sterling silver bird's nest with Tiffany Blue® porcelain eggs and the Tiffany® Setting.

